

RIVER BRIDGE P.U.D. PHASE 3B

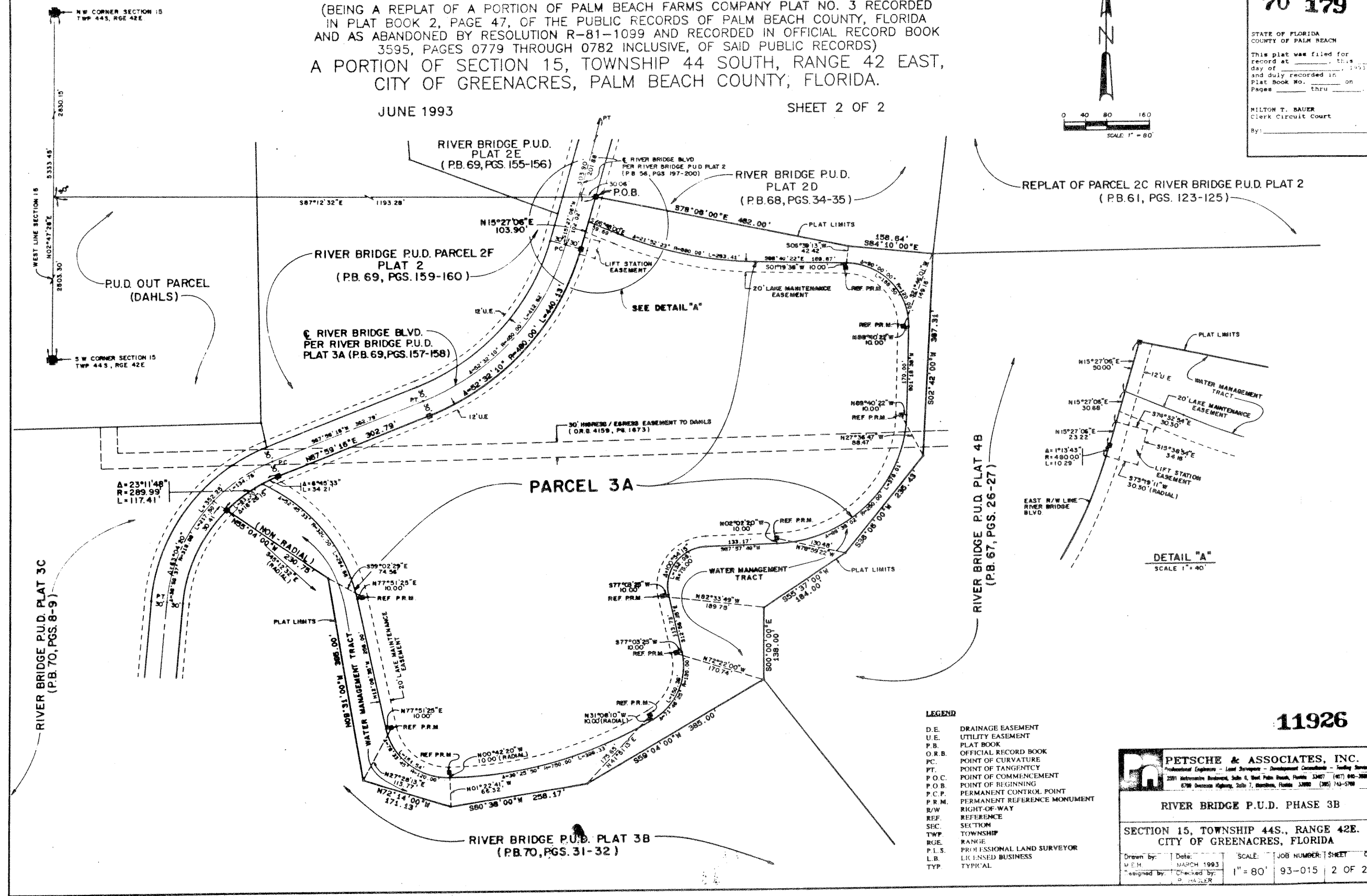
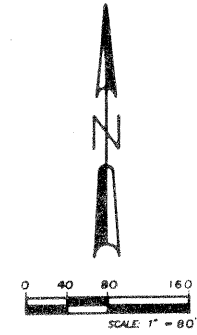
(BEING A REPLAT OF A PORTION OF PALM BEACH FARMS COMPANY PLAT NO. 3 RECORDED IN PLAT BOOK 2, PAGE 47, OF THE PUBLIC RECORDS OF PALM BEACH COUNTY, FLORIDA AND AS ABANDONED BY RESOLUTION R-81-1099 AND RECORDED IN OFFICIAL RECORD BOOK 3595, PAGES 0779 THROUGH 0782 INCLUSIVE, OF SAID PUBLIC RECORDS)
 A PORTION OF SECTION 15, TOWNSHIP 44 SOUTH, RANGE 42 EAST, CITY OF GREENACRES, PALM BEACH COUNTY, FLORIDA.

JUNE 1993

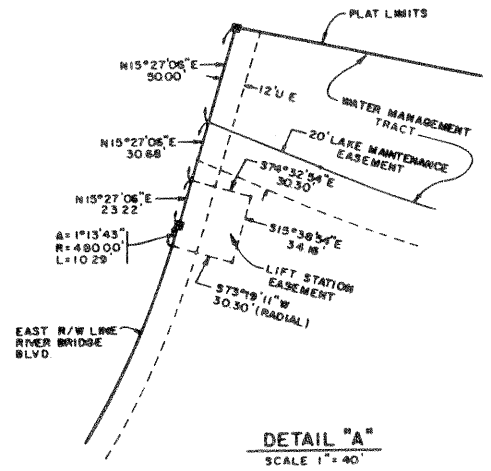
SHEET 2 OF 2

179
70 179

STATE OF FLORIDA
 COUNTY OF PALM BEACH
 This plat was filed for record at _____ this day of _____, 1993, and duly recorded in Plat Book No. _____ on Pages _____ thru _____
 MILTON T. BAUER
 Clerk Circuit Court
 By: _____



REPLAT OF PARCEL 2C RIVER BRIDGE P.U.D. PLAT 2 (PB. 61, PGS. 123-125)



- LEGEND**
- D.E. DRAINAGE EASEMENT
 - U.E. UTILITY EASEMENT
 - P.B. PLAT BOOK
 - O.R.B. OFFICIAL RECORD BOOK
 - P.C. POINT OF CURVATURE
 - P.T. POINT OF TANGENCY
 - P.O.C. POINT OF COMMENCEMENT
 - P.O.B. POINT OF BEGINNING
 - P.C.P. PERMANENT CONTROL POINT
 - P.R.M. PERMANENT REFERENCE MONUMENT
 - R/W RIGHT-OF-WAY
 - REF. REFERENCE MONUMENT
 - SEC. SECTION
 - TWP. TOWNSHIP
 - RGE. RANGE
 - P.L.S. PROFESSIONAL LAND SURVEYOR
 - L.B. LICENSED BUSINESS
 - TYP. TYPICAL

11926

PETSCHKE & ASSOCIATES, INC.
 Professional Engineers - Land Surveyors - Development Consultants - Surveyors
 2201 International Boulevard, Suite 4, West Palm Beach, Florida 33417 (407) 840-3600
 6790 Greenway Highway, Suite 7, Houston, Florida 33080 (305) 743-5700

RIVER BRIDGE P.U.D. PHASE 3B

SECTION 15, TOWNSHIP 44S., RANGE 42E.
 CITY OF GREENACRES, FLORIDA

Drawn by: _____ Date: MARCH 1993 Scale: 1" = 80' Job Number: 93-015 Sheet: 2 OF 2
 W.E.H. Checked by: _____
 Assigned by: P. HADLER